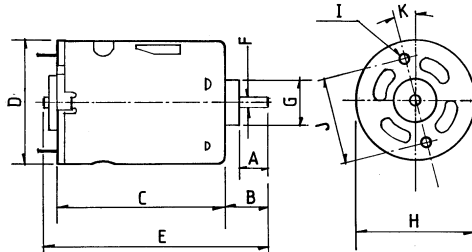


## RE-540/1 (3 POLE)



Part No. 457RE-540/1 (WITH BRACKET)  
 Part No. 719RE-540/1 (WITHOUT BRACKET)  
 Part No. 726 MOTOR BRACKET (90° ONLY)

24 volt versions are available for this range of motors. Performance data is similar to 12 volt versions. This version also has an extended 10mm rear shaft to accommodate motor encoders.



Part No's:  
 457RE540124V  
 719RE540124V

Weight 146g (approx)

DIMENSIONS	A	B	C	D	E	F	G	H	I	J
Millimeter	9.0	13.5	50.0	35.8	68.0	3.175	13.0	35.7	M3	25.0
Decimal Inches	0.354	0.531	1.969	1.409	2.67	0.125	0.512	1.406		0.984

MODEL	VOLTAGE		NO LOAD		AT MAXIMUM EFFICIENCY						STALL TORQUE	
	OPERATING RANGE	NOMINAL	SPEED	CURRENT	SPEED	CURRENT	TORQUE		OUTPUT	EFF	TORQUE	
			R.P.M.	A	R.P.M.	A	oz-in	g-cm	W	%	oz-in	g-cm
RE-540/1	4.5 - 15	6v Constant	7500	0.45	6180	2.1	1.64	118.2	7.49	59.4	9.31	670
RE-540/1	4.5 - 15	12v Constant	14500	0.7	12048	2.81	2.22	160	19.8	62.71	14.29	1029

Stall Current RE-540/1 at 6v = 8.24A Stall Current RE-540/1 at 1.5v = 2.41AA