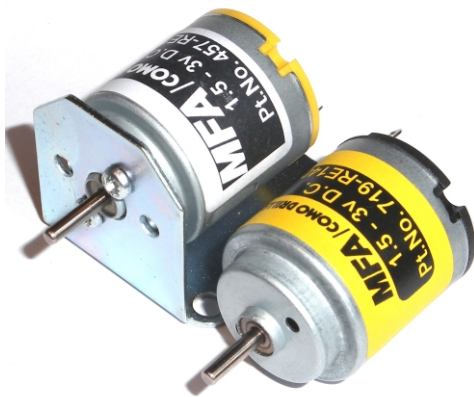
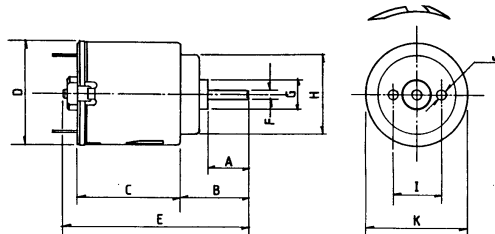


RE-140 (3 POLE) & RE-140/1



Part No.	457RE-140	(WITH BRACKET)
Part No.	719RE-140	(WITHOUT BRACKET)
Part No.	457RE-140/1	(WITH BRACKET)
Part No.	719RE-140/1	(WITHOUT BRACKET)
Part No.	724	MOTOR BRACKET (90° ONLY)



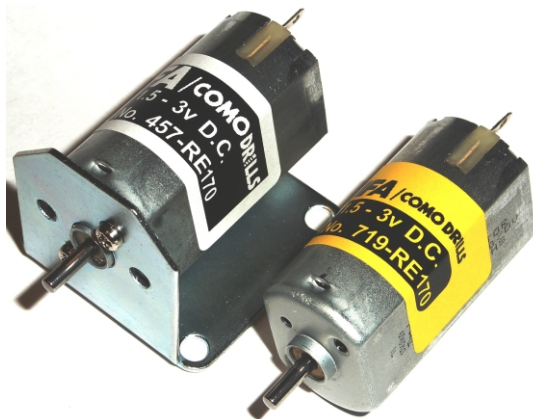
Weight 20g (approx)

DIMENSIONS	A	B	C	D	E	F	G	H	I	J	K
Millimeter	8.3	14.0	21.0	21.0	38.0	2.0	6.15	16.0	10.0	2.0	20.15
Decimal Inches	0.33	0.55	0.827	0.827	1.496	0.079	0.242	0.63	0.394	0.079	0.793

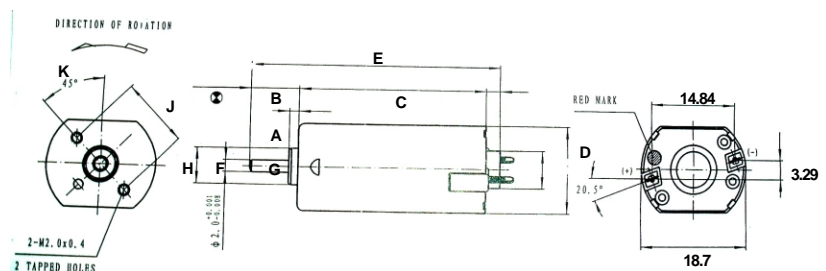
MODEL	VOLTAGE		NO LOAD		AT MAXIMUM EFFICIENCY						STALL TORQUE	
	OPERATING RANGE	NOMINAL	SPEED R.P.M.	CURRENT A	SPEED R.P.M.	CURRENT A	TORQUE oz-in	TORQUE g-cm	OUTPUT W	EFF %	oz-in	g-cm
RE-140	1.5-3	1.5v Constant	8200	0.190	6250	0.62	0.089	6.4	0.400	44.2	0.375	27.0
RE-140	1.5-3	3v Constant	15300	0.26	12200	1.04	1.444	13	2.51	52.3	0.750	64.0
RE-140/1	3-9	6v Constant	9200	0.066	7071	0.219	0.11	8.1	0.589	44.79	0.48	35.1

Stall Current RE-140 at 1.5v = 1.6A RE-140 at 3v 3.0A, RE-140/1 at 6v 0.7A

RE-170 (3 POLE)



Part No.	457RE-170	(WITH BRACKET)
Part No.	719RE-170	(WITHOUT BRACKET)
Part No.	724	MOTOR BRACKET (90° ONLY)



Weight 29g (approx)

DIMENSIONS	A	B	C	D	E	F	G	H	J	K
Millimeter	6.7	8.3	32.0	18.7	42.7	2.0	6.5	14.5	12.0	45°
Decimal Inches	0.26	0.33	1.26	0.74	1.68	0.08	0.24	0.57	0.47	

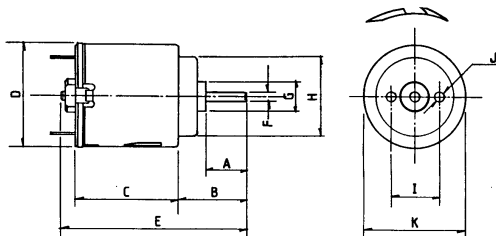
MODEL	VOLTAGE		NO LOAD		AT MAXIMUM EFFICIENCY						STALL TORQUE	
	OPERATING RANGE	NOMINAL	SPEED R.P.M.	CURRENT A	SPEED R.P.M.	CURRENT A	TORQUE oz-in	TORQUE g-cm	OUTPUT W	EFF %	oz-in	g-cm
RE-170	1.5 - 3	3v Constant	10400	0.17	8870	1.03		27	2.47	79.9		184

Stall Current RE-170 at 1.5 - 3.0v = 6.0A

RE-260 (3 POLE)



Part No. 457RE-260 (WITH BRACKET)
 Part No. 719RE-260 (WITHOUT BRACKET)
 Part No. 724 MOTOR BRACKET (90° ONLY)



Weight 29g (approx)

DIMENSIONS	A	B	C	D	E	F	G	H	I	J	K
Millimeter	8.2	11.3	23.5	23.7	42.0	2.0	6.1	19.1	11.5	2.3	23.7
Decimal Inches	0.32	0.44	0.93	0.93	1.65	0.079	0.24	0.75	0.45	0.09	0.93

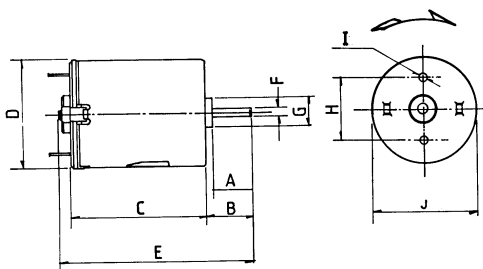
MODEL	VOLTAGE		NO LOAD		AT MAXIMUM EFFICIENCY						STALL	
	OPERATING RANGE	NOMINAL	SPEED R.P.M.	CURRENT A	SPEED R.P.M.	CURRENT A	TORQUE oz-in	TORQUE g-cm	OUTPUT W	EFF %	TORQUE oz-in	TORQUE g-cm
RE-260	3 - 6	3v Constant	4242	0.042	3296	0.151		6.8	0.345	33.91		30.61
RE-260	3 - 6	4.5v Constant	6722	0.065	5256	0.227		9.9	0.53	50.4		45.9
RE-260	3 - 6	6v Constant	8478	0.087	6587	0.302		13.6	0.92	31.5		61.84

Stall Current RE-260 at 3v = 0.58A, At 4.5v = 0.84A, at 6v = 1.10A

RE-280 (3 POLE) & RE-280/1 & RE-280/5



Part No. 457RE-280 (WITH BRACKET)
 Part No. 457RE-280/1 (WITH BRACKET)
 Part No. 457RE-280/5 (WITH BRACKET)
 Part No. 719RE-280 (WITHOUT BRACKET)
 Part No. 719RE-280/1 (WITHOUT BRACKET)
 Part No. 719RE-280/5 (WITHOUT BRACKET)
 Part No. 724 MOTOR BRACKET (90° ONLY)



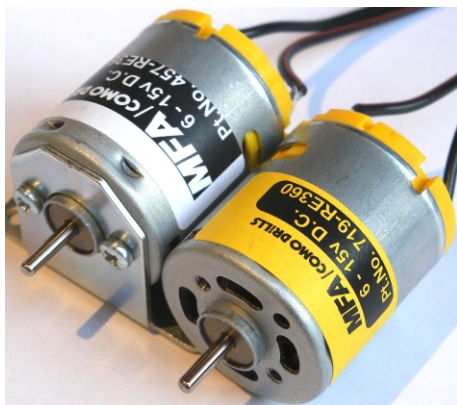
Weight 44g (approx)

DIMENSIONS	A	B	C	D	E	F	G	H	I	J
Millimeter	7.40	12.0	30.5	23.8	42.0	2.0	6.35	14.0	2.3	24.2
Decimal Inches	0.41	0.472	1.201	0.937	1.65	0.078	0.250	0.551	0.090	0.953

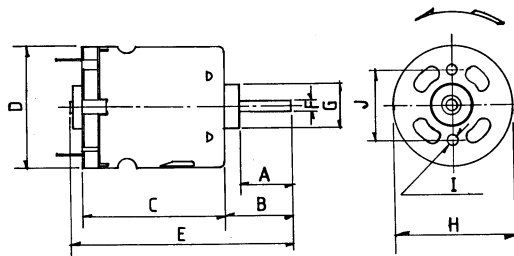
MODEL	VOLTAGE		NO LOAD		AT MAXIMUM EFFICIENCY						STALL	
	OPERATING RANGE	NOMINAL	SPEED R.P.M.	CURRENT A	SPEED R.P.M.	CURRENT A	TORQUE oz-in	TORQUE g-cm	OUTPUT W	EFF %	TORQUE oz-in	TORQUE g-cm
RE-280	1.5 - 3	3v Constant	8800	0.24	7200	1.06	0.32	23.2	1.71	53.8	1.75	126.0
RE-280/1	12 - 24	12v Constant	8224	0.046	6636	0.194	0.27	19.2	1.31	56.1	1.389	99.3
RE-280/5	3 - 6	6v Constant	9256	0.108	7703	0.534	0.33	23.7	1.87	58.4	2.648	141.2

Stall Current RE-280 at 3v = 4.8A, RE-280/1 at 12v = 0.81A. RE-280/5 at 6v = 2.65A

RE-360 (3 POLE) & RE-360/1



Part No. 457RE-360 (WITH BRACKET)
 Part No. 719RE-360 (WITHOUT BRACKET)
 Part No. 457RE-360/1 (WITH BRACKET)
 Part No. 719RE-360/1 (WITHOUT BRACKET)
 Part No. 725 MOTOR BRACKET (90° ONLY)



Weight 51g (approx)

DIMENSIONS	A	B	C	D	E	F	G	H	I	J
Millimeter	8.2	11.5	32.5	27.63	47.0	2.305	10.0	27.5	M2.6	16.0
Decimal Inches	0.323	0.453	1.28	1.088	1.85	0.091	0.394	1.083		0.63

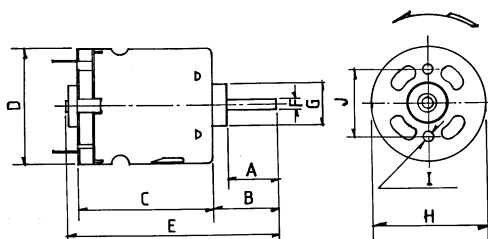
MODEL	VOLTAGE		NO LOAD		AT MAXIMUM EFFICIENCY						STALL	
	OPERATING RANGE	NOMINAL	SPEED R.P.M.	CURRENT A	SPEED R.P.M.	CURRENT A	TORQUE		OUTPUT W	EFF %	TORQUE	
							oz-in	g-cm			oz-in	g-cm
RE-360	6 - 15	12v Constant	10420	0.143	8768	0.758		64.2	58	63.5		405.0
RE-360/1	3 - 6	6v Constant	10450	0.31	8706	1.55		63.4	56.6	60.9		379.8

Stall Current RE-360 at 12v = 4.02A. RE-360/1 at 6v = 7.73A

RE-380 (3 POLE)



Part No. 457RE-380 (WITH BRACKET)
 Part No. 719RE-380 (WITHOUT BRACKET)
 Part No. 725 MOTOR BRACKET (90° ONLY)



Weight 69g (approx)

DIMENSIONS	A	B	C	D	E	F	G	H	I	J
Millimeter	14.55	17.15	37.8	27.7	57.15	2.30	10.0	27.7	M2.5x5	16.0
Decimal Inches	0.57	0.68	1.496	1.091	2.244	0.091	0.394	1.083	Taptite	0.630

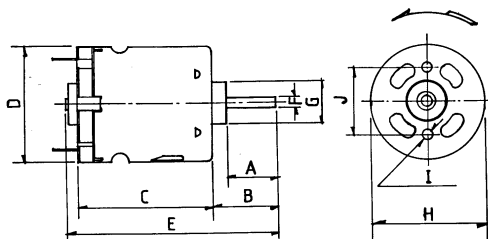
MODEL	VOLTAGE		NO LOAD		AT MAXIMUM EFFICIENCY						STALL	
	OPERATING RANGE	NOMINAL	SPEED R.P.M.	CURRENT A	SPEED R.P.M.	CURRENT A	TORQUE		OUTPUT W	EFF %	TORQUE	
							oz-in	g-cm			oz-in	g-cm
RE-380	3 - 7.2	7.2v Constant	26990	1.09	22356	5.25	1.49	107.3	24.6	60	8.68	625.2

Stall Current RE-380 at 7.2v = 11.2A

RE-385 (5 POLE)



Part No. 457RE-385 (WITH BRACKET)
 Part No. 719RE-385 (WITHOUT BRACKET)
 Part No. 725 MOTOR BRACKET (90° ONLY)



Weight 66g (approx)

DIMENSIONS	A	B	C	D	E	F	G	H	I	J
Millimeter	9.4	12.0	38.0	27.7	52.5	2.305	10.0	27.5	M2.6	16.0
Decimal Inches	0.453	0.591	1.496	1.091	2.205	0.091	0.394	1.083		0.630

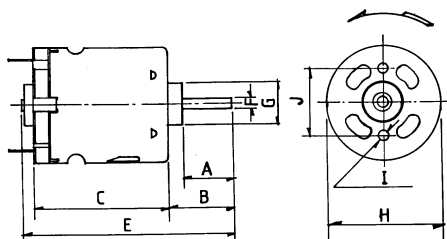
MODEL	VOLTAGE		NO LOAD		AT MAXIMUM EFFICIENCY						STALL	
	OPERATING RANGE	NOMINAL	SPEED R.P.M.	CURRENT A	SPEED R.P.M.	CURRENT A	TORQUE		OUTPUT W	EFF %	oz-in	g-cm
RE-385	4.5 - 15	12v Constant	11646	0.18	9869	0.99	1.09	78.4	7.9	66.1	7.13	513.5
RE-385/24V	24	24v Constant	11748	0.09	9946	0.499		76.9	8.1	68		501.4

Stall Current RE-385 at 12v = 5.55A. RE-385/24v at 24v = 2.75A

RE-385LN (5 POLE). NOISE ATTENUATED



Part No. 457RE-385LN (WITH BRACKET)
 Part No. 719RE-385LN (WITHOUT BRACKET)
 Part No. 725 MOTOR BRACKET (90° ONLY)



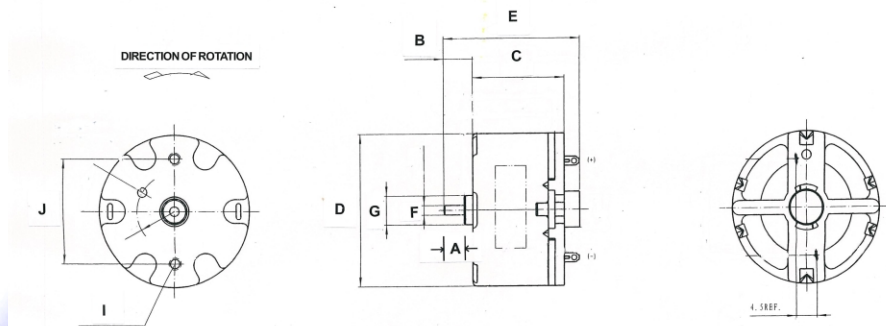
Weight 110g (approx)

DIMENSIONS	A	B	C	E	F	G	H	I	J
Millimeter	6	8.5	46.5	57.3	2.3	10.0	29.	M3	16.0

MODEL	VOLTAGE		NO LOAD		AT MAXIMUM EFFICIENCY						STALL	
	OPERATING RANGE	NOMINAL	SPEED R.P.M.	CURRENT A	SPEED R.P.M.	CURRENT A	TORQUE		OUTPUT W	EFF %	oz-in	g-cm
RE-385LN	6 - 12	12v Constant	7300	0.15	5950	0.9		110	6.72	62		660

Stall Current RE-385LN at 12v = 5.0A

RE-500LN (SUITABLE FOR SOLAR APPLICATIONS)



Weight 41g (approx)

DIMENSIONS	A	B	C	D	E	F	G	I	J
Millimeter	4.4	6.3	19.5	32	29.1	2	6.1	M2 6x0.45	22.0

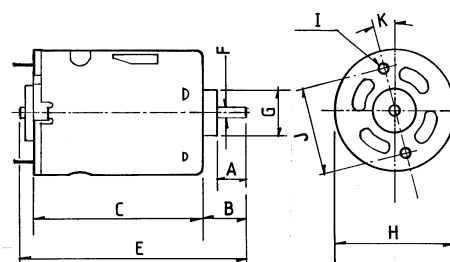
MODEL	VOLTAGE		NO LOAD		AT MAXIMUM EFFICIENCY						STALL TORQUE	
	OPERATING RANGE	NOMINAL	SPEED R.P.M.	CURRENT A	SPEED R.P.M.	CURRENT A	TORQUE oz-in	TORQUE g-cm	OUTPUT W	EFF %	oz-in	g-cm
RE-500LN	3 - 6	6v Constant	2690	0.017	2197	0.074		12.2	0.28	62.1		66.9

Stall Current RE-500LN at 6v = 0.38A

RE-540LN (5 POLE). NOISE ATTENUATED



Part No. 457RE-540LN (WITH BRACKET)
 Part No. 719RE-540LN (WITHOUT BRACKET)
 Part No. 726 MOTOR BRACKET (90° ONLY)



Weight 212g (approx)

DIMENSIONS	A	B	C	E	F	G	H	I	J
Millimeter	5.5	9.75	57.1	69.2	3.175	14.0	37	M3	25.0

MODEL	VOLTAGE		NO LOAD		AT MAXIMUM EFFICIENCY						STALL TORQUE	
	OPERATING RANGE	NOMINAL	SPEED R.P.M.	CURRENT A	SPEED R.P.M.	CURRENT A	TORQUE oz-in	TORQUE g-cm	OUTPUT W	EFF %	oz-in	g-cm
RE-540LN	4.5 - 15	12v Constant	6000	0.26	5258	1.42	3.1	223	12.8	71	25.3	1825

Stall Current RE-540LN at 6v = 10.0 A

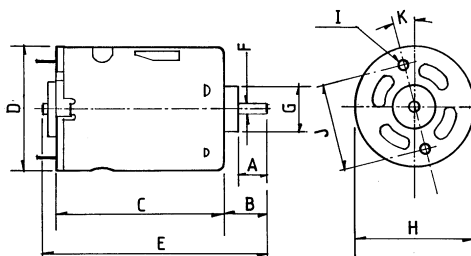
RE-540/1 (3 POLE)



Part No. 457RE-540/1 (WITH BRACKET)
 Part No. 719RE-540/1 (WITHOUT BRACKET)
 Part No. 726 MOTOR BRACKET (90° ONLY)

24 volt versions are available for this range of motors. Performance data is similar to 12 volt versions. This version also has an extended 10mm rear shaft to accommodate motor encoders.

Part No's:
 457RE540124V
 719RE540124V



Weight 146g (approx)

DIMENSIONS	A	B	C	D	E	F	G	H	I	J
Millimeter	9.0	13.5	50.0	35.8	68.0	3.175	13.0	35.7	M3	25.0
Decimal Inches	0.354	0.531	1.969	1.409	2.67	0.125	0.512	1.406		0.984

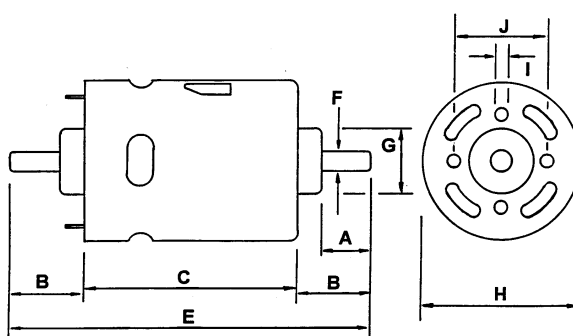
MODEL	VOLTAGE		NO LOAD		AT MAXIMUM EFFICIENCY						STALL	
	OPERATING RANGE	NOMINAL	SPEED R.P.M.	CURRENT A	SPEED R.P.M.	CURRENT A	TORQUE oz-in	TORQUE g-cm	OUTPUT W	EFF %	TORQUE oz-in	TORQUE g-cm
RE-540/1	4.5 - 15	6v Constant	7500	0.45	6180	2.1	1.64	118.2	7.49	59.4	9.31	670
RE-540/1	4.5 - 15	12v Constant	14500	0.7	12048	2.81	2.22	160	19.8	62.71	14.29	1029

Stall Current RE-540/1 at 6v = 8.24A Stall Current RE-540/1 at 1.5v = 2.41AA

RE-800 (3 POLE)



Part No. 457RE-800 (WITH BRACKET)
 Part No. 719RE-800 (WITHOUT BRACKET)
 Part No. 1114/2 MOTOR BRACKET (90° ONLY)



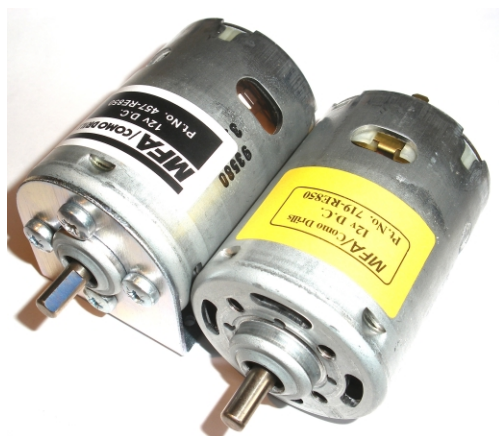
Weight 595g (approx)

DIMENSIONS	A	B	C	E	F	G	H	I	J
Millimeter	13.2	20.5	69.0	110.0	6.35	21.75	51.8	M5	32.0
Decimal Inches	0.520	0.810	2.720	4.330	0.250	0.860	2.040		1.260

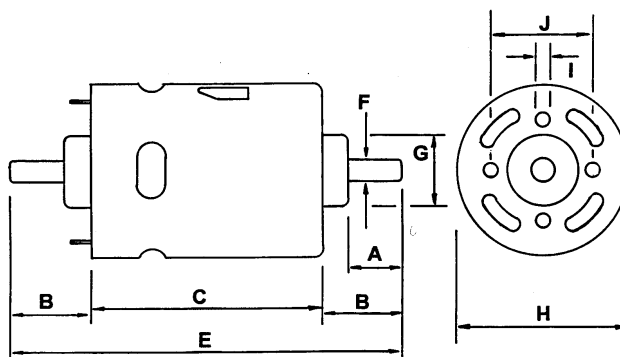
MODEL	VOLTAGE		NO LOAD		AT MAXIMUM EFFICIENCY						STALL	
	OPERATING RANGE	NOMINAL	SPEED R.P.M.	CURRENT A	SPEED R.P.M.	CURRENT A	TORQUE oz-in	TORQUE g-cm	OUTPUT W	EFF %	TORQUE oz-in	TORQUE g-cm
RE-800	6 - 12	12v Constant	5000	1.1	4340	4.6	12.07	869	38.73	70.2	87.0	6264

Stall Current RE-800 at 12v = 25.86A

RE-850 (3 POLE)



Part No. 457RE-850 (WITH BRACKET)
 Part No. 719RE-850 (WITHOUT BRACKET)
 Part No. 1114/2 MOTOR BRACKET (90° ONLY)



Weight 595g (approx)

DIMENSIONS	A	B	C	E	F	G	H	I	J
Millimeter	13.2	20.5	69.0	110.0	6.35	21.75	51.8	M5	32.0
Decimal Inches	0.520	0.810	2.720	4.330	0.250	0.860	2.040		1.260

MODEL	VOLTAGE		NO LOAD		AT MAXIMUM EFFICIENCY						STALL	
	OPERATING RANGE	NOMINAL	SPEED R.P.M.	CURRENT A	SPEED R.P.M.	CURRENT A	TORQUE		OUTPUT W	EFF %	TORQUE	
							oz-in	mN-cm			oz-in	g-cm
RE-850	6 - 12	12v Constant	9778	1.90	8311	10.82		92.13	80.16	61.74		614

Stall Current RE-850 at 12v = 61.34A